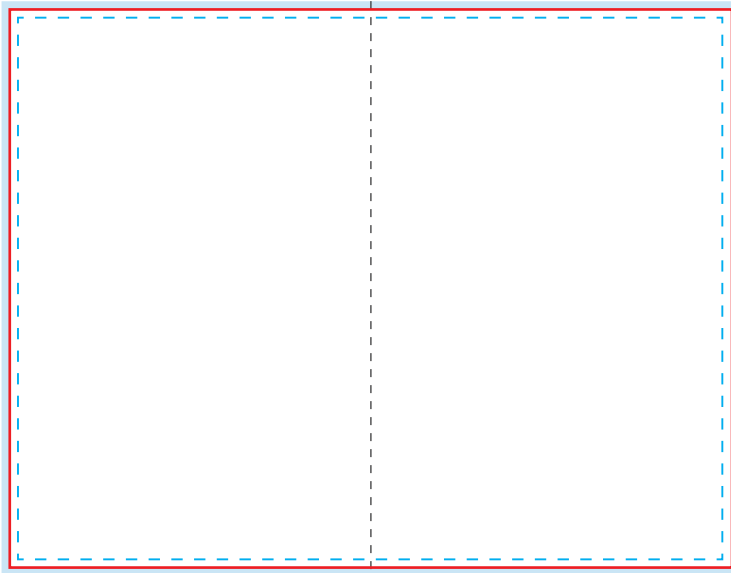


## BIFOLD BROCHURE • 11" X 17"



### Bleed area (17.25" x 11.25")



Make your artboard at this size. Make sure your background extends to fill the whole bleed area to avoid white edges!



### Cut Line (17" x 11")

This is where we aim to cut in production.



### Safe area (16.75" x 10.75")

Make sure important aspects of your design like text and logos are inside the safe area to avoid being cut off.



### Image

Artwork should be a vector PDF or images at 300dpi to avoid pixelated images. Please don't forget to embed all images.



### Save File as PDF

Save files as PDF or AI (Adobe Illustrator) files.

**Please outline all fonts and delete guidelines!**



### Colour

Set your colour profile as CMYK instead of RGB, which cannot always be replicated. We **cannot** be responsible for variances in final printed colours. Printed samples are available at an additional cost.



### Additional Files

Please provide all font files and original image files if any editing is required. All PDF images must be embedded in the document.

## Any Questions?

Actual size

back  
cover

front  
cover n

Inside  
page1

inside  
page 2